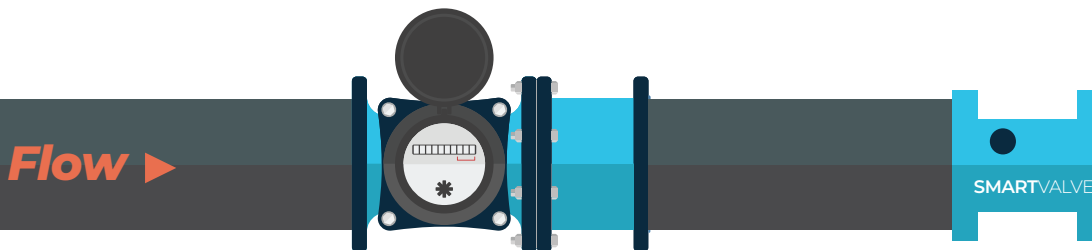


Installation and Adjustment Instructions

Congratulations on your purchase of the SMARTVALVE™.
You are about to start saving!

Installation should only be done by a licensed plumber or Mechanical Engineer.



Install after water meter and before pressure reducer or booster pump. Soon after the backflow is usually good place.

THREADED SMARTVALVE™

1. Identify installation location and prepare pipe for installation on the user side of the water meter. Install location should be before any other fixtures or devices such as a pressure reducer or booster pump. Immediately after the backflow preventer is often a good place.
2. It is recommended wherever possible (but not critical) to have 10 diameters of straight pipe before and after the valve to ensure there are no turbulence issues. I.e.: 2" valve x 10 dia. = 20" before and after. If you must choose, leave more straight pipe before the valve.
3. The Smart Valve is female NPT threaded. Prepare pipe threading with pipe tape.
4. **DO NOT APPLY SWEAT HEAT TO THE VALVE - THIS WILL DAMAGE IT AND VOID THE WARRANTY.**
5. Make sure the closed orifice end faces upstream and the open orifice end faces downstream. See flow direction arrow on the valve.
6. Tighten ends of pipe onto pipe threading until it is secure with no leaks. Do not over-tighten.
7. Slowly turn water supply back on. Vent trapped air from the water line where possible. Flow maybe turbulent until excess air is out of the system.



IMPORTANT: If the water line is 6-inch or smaller AND used as a ground default Line, **YOU MUST USE A GROUNDING STRAP ACROSS THE VALVE FROM PIPE TO PIPE.** The Smart Valve will NOT conduct an electrical current through the pipe. Flow Dynamics, LLC is not liable for a faulty installation by a third party.

Adjustment Instructions

The Smart Valve is an EXTERNALLY ADJUSTABLE device, allowing you to fine tune the spring setting for maximum savings without any negative effects, and to allow you to adjust to any future changes in your water system pressure or flow rate.

Installing a pressure gauge (temporary or permanent) at least a few feet downstream of the Smart Valve will greatly assist in calibrating the valve with your water system, but is not mandatory.

Your goal is to adjust the Smart Valve to the strongest setting tolerable to the system without causing problems or complaints due to too large of a pressure drop. The stronger the setting the more you will save in meter accuracy and water over-consumption.

Once the valve has been properly installed, locate the 'adjustment windows' near the center of the valve. Inside are numerous slots designed to fit the adjustment tool. **Attach the tool to a 1/2" head ratchet handle** (does not apply to 3/4" and 1" valves as they use an included straight dowel pin). You will insert the adjustment tool pin into one of the slots and rotate the inner collar in either the PLUS (+) or MINUS (-) direction as marked on the valve.

The Smart Valve is delivered to you near the full MINUS setting where there should be little to no effect from the valve. Insert the pin into a slot in the window and rotate the inner collar towards the PLUS side. Each full length of window adjustment is a 'click'.

Each click towards the PLUS side will further increase the backpressure upstream towards the water meter, and should result in a corresponding pressure drop of 1-2 PSI downstream of the valve. There are approximately 22-23 clicks between full MINUS and full PLUS.

If an adjustment needs to be made after the Smart Valve has been in operation for some time, you might experience 'sticktion', where it seems the inner collar is 'stuck' and the first adjustment will be more difficult. Once you break the 'sticktion' with a little extra force the valve will be easier to adjust.

